



Update on World Archery and Archery GB Rule Changes 2022

**—
05.03.2022**

The background features a large, light green watermark of the World Archery logo. It consists of a bow at the top, a central figure of an archer in a dynamic pose, and the letters 'W.A.' at the bottom, all enclosed within a diamond-shaped border.

**Rules that came in on
15/01/2022
World Archery**

Equipment Failure – TARGET ONLY

- **This is for Target Only**
- If you have an equipment failure in Target then you will not be allowed any additional to shoot any arrows you have missed.
- You will be able to repair the equipment or use your spare bow, but any arrows that you have not shot will be scored as a Miss.
- The same applies for minor medical emergencies.
- WA JC have said that if an equipment failure or medical issue is not the fault of the archer then they can have make up arrows
- Equipment Failures still exist in Clout, Field and 3D.

Equipment Failure – TARGET ONLY

- Archery GB have said that when Archery GB rounds are shot with WA rounds – such as a WRS 1440 with Metrics then the people shooting Metrics WILL get Equipment Failures as per AGB rule 304 (n)
- For World Archery Rounds shot at Clubs or which are Non Record Status then they will be allowed Equipment Failures
- For World Archery Rounds which are UK Record Status and World Record Status then they will NOT be allowed Equipment Failure
- These changes will be published in the next Archery UK magazine

Equipment Failure – TARGET ONLY

When are Equipment Failures allowed

Status	WA Round	AGB Round (inc Metrics)
World Record Status	NO	YES
UK Record Status	NO	YES
Non Record Status	YES	YES
Club Event	YES	YES

Equipment Failure – TARGET ONLY

- What should we as Judges do
 - Ask archers to let the Judges know if they have an issue so you can assist them and make sure that the DOS does not end the timing early, so if they can repair it quickly they can still go back onto the line to shoot
 - You cannot hold up the shoot whilst they repair the issue or get treatment
 - Make sure where there are Metrics that you speak to the Organiser so you know who is shooting what. Maybe advise that they have separate targets for people shooting the Ladies 1440 and those shooting a Metric I.

3m Line Issues – TARGET ONLY

- **This is for Target Only**
- Previously during Qualification, if an arrow was near the 3m area and the archer was unsure if it was inside or outside the 3m area they could stop shooting and call a Judge. The Judge would then make a decision once shooting was finished and if the arrow was not shot the archer would get time to shoot another.
- Now the archer must make a decision whether the arrow is shot or not shot. Once the end has finished the Judge should go to the shooting line and make a decision from the same position as the archer. If they think it is out then the Judge can walk forwards to double check.
- If the arrow was outside the 3m area but the archer shot a replacement then it should be dealt with by scoring the lowest 3/6 arrows, with the arrow outside the 3m area being scored as a Miss

Barebow Equipment

- Vibration Dampeners are now permitted
- Weights and Vibration Dampeners can now be fitted above a below the grip, previously weights were only allowed below the grip
 - Everything must still go through a 12.2cm ring and if anything is attached by a flexible adaptor then this cannot be moved to get it through the ring – so you cannot bend the adaptor
 - You cannot have angular brackets or connectors – so you cannot have a set up that would normally point out, but use an angular bracket so it points down (so it will fit through the ring).
- These changes apply to World Archery and Archery GB and to all disciplines.

Change of Title for Age Categories

- World Archery have changed the name of the Age Categories, hopefully this will make things clearer going forward
 - Cadets will now be known as **U18**
 - Juniors will now be known as **U21**
 - Masters will now be known as **50+**
- This is only a name change and does not affect who shoots in which Category

Traditional Bow – Field and 3D

- The Instinctive Bow has been replaced by the Traditional Bow
 - This is a non shoot through riser of laminated construction and includes wooden laminates or made of one piece of wood
 - It should be bare except for an arrow rest and nothing that could assist with aiming. Weights inside the bow riser are permitted if installed during the manufacturing process and not post construction. Any such weights shall be completely invisible on the exterior of the riser and be covered by laminates applied during the initial construction with no visible holes, plugged holes, covers or caps with the exception of the original manufacturer's inlay or insert logo
 - String walking is not allowed
 - There can be nothing on the tab to help with anchoring. When shooting, the index finger or middle finger must be within 3 mm of the nock or touch the nock (split finger or 3 fingers under). When shooting split finger, a finger separator between the fingers to prevent pinching may be used. A single anchor or face walking is permitted.

Double Team Round– PARA ONLY

- The Three Person Team has been removed from Para Archery, and has been replaced with the Double Team (the Mixed Team remains).
- The Double Team is two people from the same country and in the same category who are the same gender (so the same as Mixed Team, but in Mixed Team it is two people of different genders).
- The Timings and rules are exactly the same as for the Mixed Team Round

Other Para Changes

- Lane Lines for Para only events
 - These have changed to be a minimum of 2.5m or 3.75m
 - For the Mixed Team and Doubles Team it will be a minimum of 3.75m
- Additional Para changes have come in from 01/03/2022, we will come to those shortly.

Compound Shoot Offs

- This is for any Shoot Off at the end of a Qualification/Ranking Round when there is a tie for position 8 or 104 for individuals.
 - Previously the tie was shot on a neutral boss and the same target face configuration that was used in the Round was put up – so if they were shooting A, B, C, D then 4 faces were put up and the archer would shoot at the position they were using previously – so if they were Archer 30C they would shoot at the C target.
 - Going forward there will be one face in the middle of a neutral boss (80cm face) which the archer will shoot at. There will be one archer per target.

Field and 3D Head to Heads

- This change is for Individual Matchplay in Field and 3D
- The winner of Pool A will shoot against the winner of Pool D and the winner of Pool C will shoot against the winner of Pool B for entry into the semi finals.

Team Uniforms – INFORMATION ONLY

- World Archery have clarified what colour undershirts, compression shirts and sleeves archers can wear under their Team tops during televised Finals.
 - They can be worn as long as they match the predominate colour of the Team top or are white (they can include designs, names and marks but the predominate colour should be white.
 - This may affect things such as the Youth Festival and Tour Finals, but check with the Event Director for these events.

Equipment Inspection – INFORMATION ONLY

- **This is for Information Only**
 - World Archery, in order to reduce the length of the events, has removed mandatory Equipment Inspection at **WORLD CUP** events **ONLY**.
 - This will not affect any other events and mandatory Equipment Inspection of all bows will continue at all Record Status and World Record Status events in the UK.

The background features a large, light green watermark of the World Archery logo. It consists of a bow at the top, a central figure of an archer in a dynamic pose, and the letters 'W.A.' at the bottom, all enclosed within a diamond-shaped border.

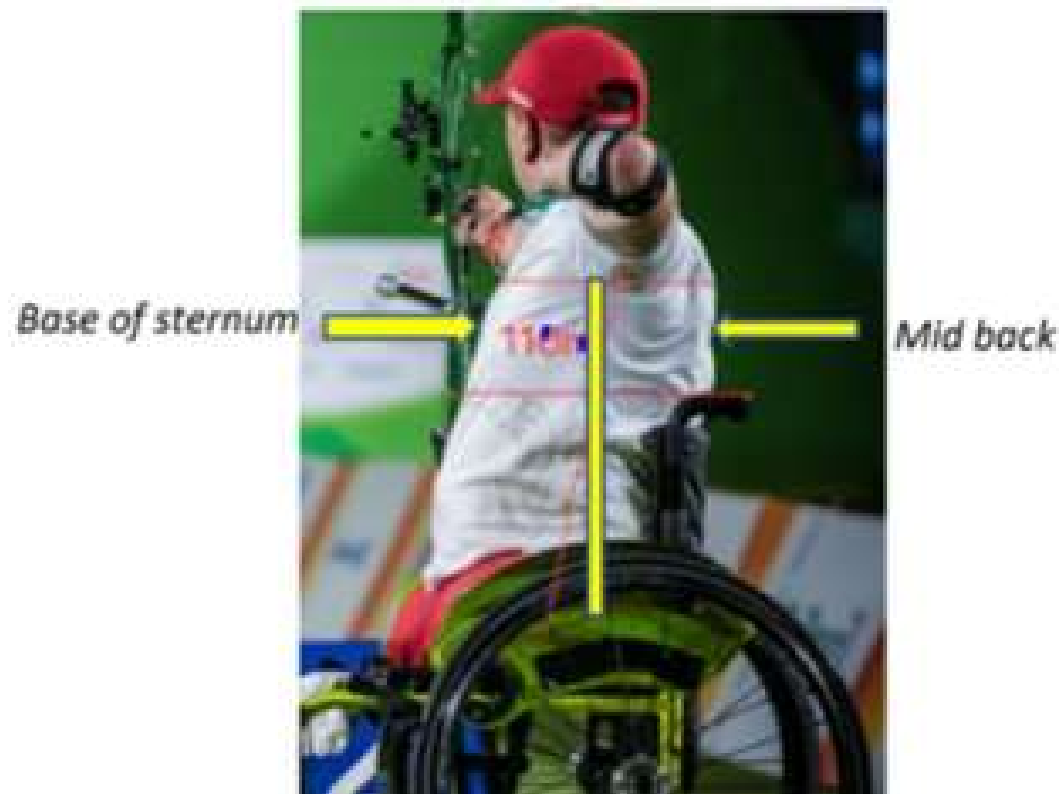
**Rules that came in on
01/03/2022
World Archery**

Para Assistive Devices

- There has been a lot of changes on Para Assistive Devices (such as stools and chairs). The information on these Devices have been moved to Appendix 2

Para Assistive Devices

- Wheelchairs
 - The rules on side support (above pelvis) (including back support from the chair and protrusions) has changed. They are now both allowed as long as they do not protrude further forward than half the width of the archers rib cage measured from half way up the breast bone to the mid back.



Para Assistive Devices

- Wheelchairs
 - All parts of the wheelchair must be below 110mm of the armpit (unless an exemption is on the Classification Card). This includes the handles of the chair, unless the handles are not directly attached to the chair back



Para Assistive Devices

- Strapping (must be allowed on the Classification Card)
 - W1 Athletes – can have strapping of any size, in any direction as long as it does not support the bow arm. They can also use a non-rigid body support/corset with straps if approved by Classifiers
 - W2/Open Athletes – can have a single body strap horizontally across the body, a maximum of 5cm wide.
 - Leg Straps are limited to 5cm wide
 - Classifiers can temporarily add a rigid or non-rigid body support/corset. This will be on the Classification Card

Para Assistive Devices

- Stools
 - Previously the size of the stool and the athlete was limited to 60cm in width and 80cm in length (along the shooting line)
 - Now the stool and the athlete should fit in the width allowed for archers on the shooting line
 - 1.25m for Para Events
 - 90cm Outdoors
 - 80cm Indoors
 - There is no longer a limit on the width

Para Assistive Devices

- Release Aid Systems
 - These are the special release aid systems such as a harness.
 - They can no longer provide any form of lateral support or act as a rigid corset

Okay



Not Okay



Not Okay



Para Assistive Devices

- Assistants
 - Archers who are unable to nock their arrows safely and efficiently or adjust their sight can have an assistant.
 - Going forward this assistant should assist during both the qualification round and match play.

Timing Changes – INFORMATION ONLY

- This is for information only
 - This change will **ONLY** apply at World Ranking Events (such as World Championships and Continental Championships), not WRS Events.
 - Alternating shooting and Teams Rounds remain the same at 20 seconds per arrow
 - For other rounds, including Qualifications and Eliminations with simultaneous shooting the time is 30 seconds per arrow (rather than 40 seconds)
 - For Para events the individual timing will be extended by 10 seconds, so 40 seconds for Qualification and Eliminations and 30 seconds for Alternating shooting – this is the same as now
 - **IT WILL NOT BE COMPULSORY AT ANY “NORMAL” EVENTS IN THE UK BUT SHOOTERS CAN CHOOSE TO DO THIS IF THEY WISH. FOR OUR EVENTS THE TIMING REMAINS THE SAME AS CURRENTLY**



Archery GB Rule Changes 01/04/2022

Archery GB changes

- Asiatic Bowstyle
- Scoring regarding bouncers
- Recognised Rounds – Name Changes
- Crossbow target rounds

Asiatic Bowstyle

Rule 206B. Asiatic Bow

- (a) Bow. The bow shall be composite in construction, made of multiple components leading to a single piece for the bow. Materials may be modern fibre glass, or traditional materials such a combination of wood, bamboo, horn. The bow may be wrapped in either leather, birch bark or snakeskin and lacquered. The bow may carry no support for the arrow. The bow must not have a pressure button or weights
- (b) String. The string may be of either natural or man-made substance.
- (c) Sights and Ground Markers. A sight or ground markers are not permitted.
- (d) Arrows. Arrows can be wood, aluminium, carbon or carbon composite. There is no limit to the maximum shaft diameter. The pile shall not exceed the diameter of the shaft at the point of fitment. Shouldered piles, whilst not disallowed, should be avoided because of excess damage to targets. Arrows shall be properly marked, so that there shall be no difficulty in claiming them.

Asiatic Bow Con't

(e) Hand Protection

(i) A thumb ring is permitted. Typically it is made of a single material, of leather, wood, Jade, plastic, horn, and various metals. The string may rest on top of the ring, or behind the ring's edge.

(ii) The thumb hooks around the string and the index finger is placed over the thumb nail to assist the hold. The thumb ring provides protection from the release of the string like a finger tab.

(iii) On the bow hand an ordinary glove, mitten or similar item may be worn but shall not be attached to the grip.

(f) (i) For the purpose of Rule 302 Safety, the bow is considered to shot off the fingers. A thumb ring is not considered as a mechanical release.

(ii) Safety. The archer's anchor point may be different to other shooting styles however archers shooting with this bow will need to ensure that they conform to Rule 102(b).

• **There will be no records, classifications or handicaps for the next few years until we can determine the uptake of usage for the Asiatic bow.**

Bouncers

- **Rule 306. Scoring – change wording from ‘Seen’**

(h) If an arrow is suspected to have rebounded from a target, the archer concerned shall draw the attention of the Judge to the fact after having shot their sixth arrow (or third if shooting in ends of 3 only) by retiring two paces from the shooting line and holding their bow above their head.

Recognised Rounds

	Round	100y	80y	60y	50y	40y	30y	20y	10y
A	St George	3	3	3					
A	Albion		3	3	3				
A	Windsor			3	3	3			
D	Windsor 50				3	3	3		
E	Windsor 40					3	3	3	
F	Windsor 30						3	3	3
A	New Western	4	4						
A	Long Western		4	4					
A	Western			4	4				
D	Western 50				4	4			
E	Western 40					4	4		
F	Western 30						4	4	
A	New National	4	2						
A	Long National		4	2					
A	National			4	2				
D	National 50				4	2			
E	National 40					4	2		
F	National 30						4	2	
A	New Warwick	2	2						
A	Long Warwick		2	2					
A	Warwick			2	2				
D	Warwick 50				2	2			
E	Warwick 40					2	2		
F	Warwick 30						2	2	

Crossbow Rounds

CROSSBOW TARGET ROUNDS

To prevent bolt damage and general wear and tear of buttresses, the rule below has been adapted.

Part 8. Crossbow Target Rounds

Rule 800. (a) (iv)

Any of the above rounds may be shoot on multi face setups where the buttress permits this and the face size (reduced zones or otherwise) is available.